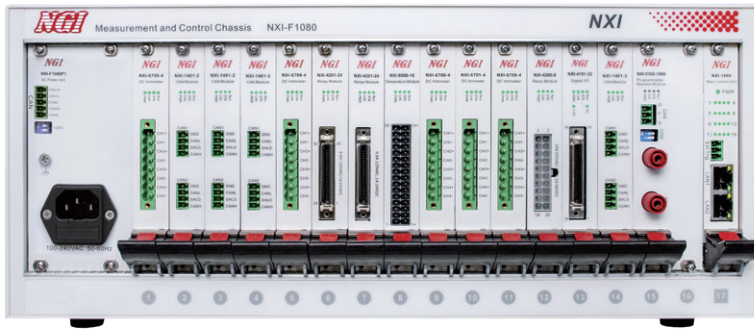


NXI-F1080 Multi-slot NXI Measurement&Control System Chassis



Product Introduction

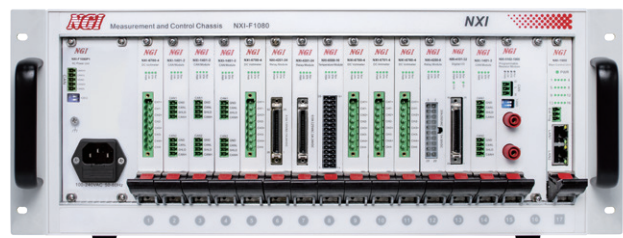
NXI-F1080 is a measurement and control system chassis based on NXI architecture (Network eXtension Interface), it adopts Gigabit LAN interface with high bandwidth, low cost, high real-time, no master-slave limitation and other advantages.

NXI-F1080 inherits NGI product family design, standard 19-inch 4U chassis with integrated 17-bit 4HP card slots, supports 1-channel main control card + 16-channel function cards, it is widely used in multi-channel, highly integrated automated testing scenarios.

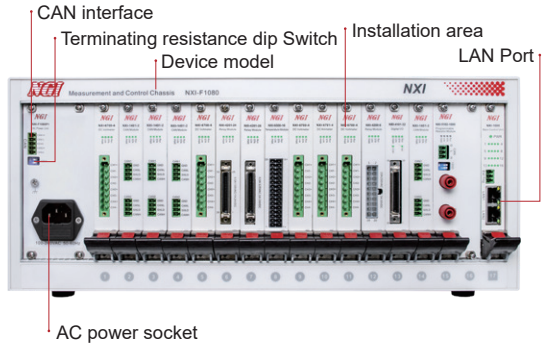
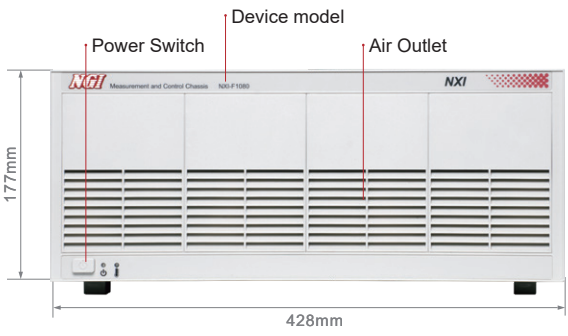
Main Features

- ▶ Electrical isolation between 17 slots
- ▶ Standard module design, accept arbitrary combination
- ▶ High throughput rate with bandwidth up to 2Gbps
- ▶ Support synchronous triggering, enabling synchronous control of multiple modules
- ▶ Easy to program based on standard Ethernet protocols
- ▶ Power loaded up to 1000W, no external power supply required
- ▶ Support front and rear rack mounting to meet a variety of application scenarios
- ▶ Intelligent temperature control fan, lower noise
- ▶ Standard 19-inch 4U chassis, easy to rack mounting

Supports Front and Rear Rack Mounting



Product Dimension



NXI Modular Instrument